



Think outside the cube

qb Systems Inc.

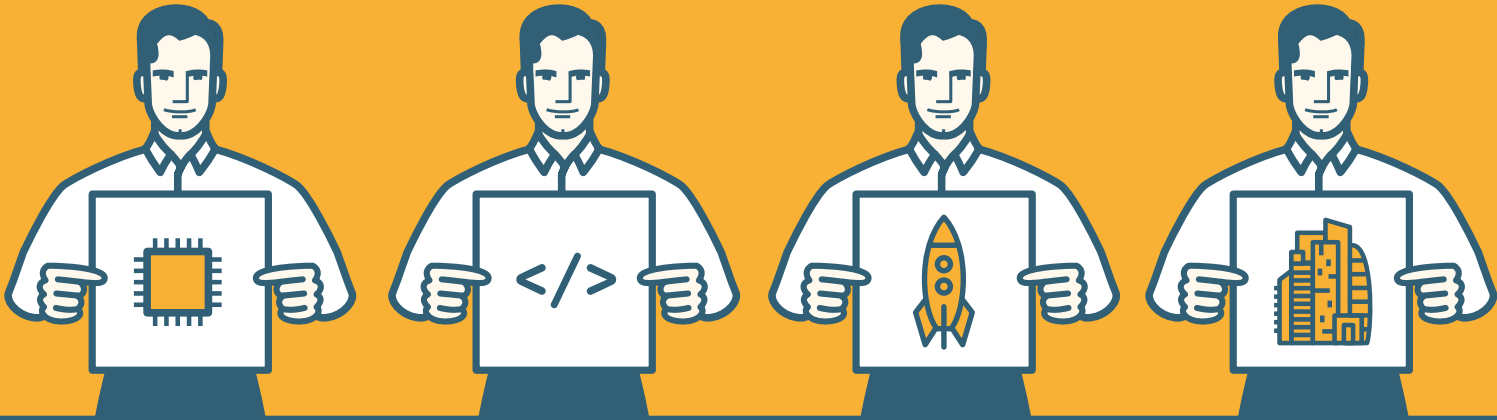


About us

qb Systems is a reliable and innovative provider of IT and Infrastructure solutions and services. We offer customer-tailored designs and cost effective implementation in all aspects of IT operations: from planning, budgeting and deployment to maintenance, support and optimization.

We are a team of seasoned IT professionals who have extensive expertise and several decades of combined experience in the field. Our client portfolio is diverse because we strive to connect with people: established high tech industry leaders, fledgling startups, companies and organizations from the “traditional” industrial and public sectors.

Our accumulated knowledge stretches far and wide spanning systems engineering, state-of-the-art networking, virtualization and storage, security, virtualization, DevOps and project management. We offer specialized tailored solutions for the semiconductor design and software development companies.



About us

We like it when our customers present a range of requirements and seemingly opposing objectives.

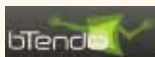
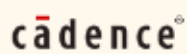
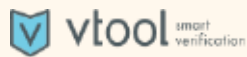
Problems inspire us to find solutions:

- **How to create a result that is both high-end and cost-effective?**
- **Where does the trade-off between ultimate performance and optimum functionality lie?**
- **What does it take to guarantee both swift response time and continuous support?**
- **Have you ever wondered about the true distance between different workflows, processes and priority lists? Some need “deadline over substance”, some require “smooth operation over budget”, just to name a few.**
- **How does one unite the corporate conservative approach with the need for agile change? Or the frenzied dynamism of the “startup culture” with the desire to keep things stable and reliable?**

After tackling these questions for many years we have come up with many practical answers, resulting in many success stories along the way.



Our clients



acquired by



now part of
cadence





Our approach

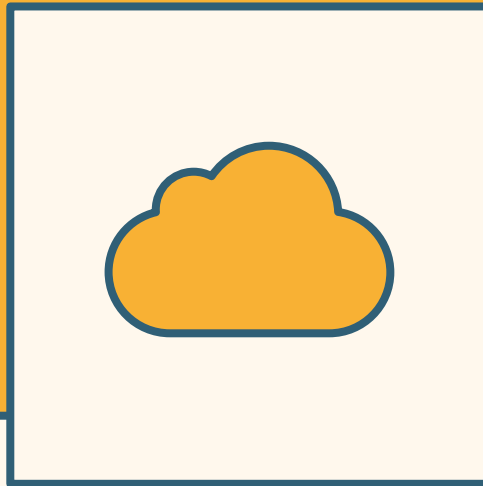
We are constantly striving to narrow the gap between the “Old IT” (conservative) and the “New IT” (innovative). New technologies with ever-expanding possibilities are being born at a breathtaking pace and the need to stay on top of things and maintain full control of quality and stability of the operations is a must. To remain agile, companies need to seamlessly connect these two worlds, two approaches, two patterns of reasoning.

qb Systems started 20 years ago with traditional IT consulting and progressed to cloud-based solutions and complex in-house environments that are flexible enough to accommodate a constant stream of change and up-to-date agile practices.

We accurately foresaw the change of trends in the markets and technologies, both globally and within the relevant domains. So we know firsthand how to bridge the gap, how to make solutions sustainable for the long range while preserving good old fashioned values such as friendly customer support and providing helpdesk SLA (guaranteed response and resolution times).

We are able to smoothly integrate new innovations while maintaining reliability by finding the right balance of the conservative and the disruptive approaches. We enable our customers to function on both planes while letting their employees on all levels to be focused on core business in order to yield maximum value, with no compromises when scaling up or out, when shifting computational paradigms, when adding new functional requirements, when setting improved performance goals.

We operate with the belief that “knowledge shared is power multiplied” and as a result are happy to share our expertise, best practices and experience with our clients.



qb-Cloud

qb-Cloud is an affordable, flexible and scalable Cloud based solutions that cover both Infrastructure as a Service (IaaS) and Software as a Service (SaaS) use cases.

We create and deploy environments tailored for specialized domains and optimized for high performance tasks. Ready-made solutions exist for the Semiconductor Design and Software Development industry segments, we can offer general purpose application hosting and customize the setup for each case. We provide fully managed, controlled and secured environments in the Cloud, which are by design accessible from anywhere, easily monitored and highly available.

Our ready-to-go infrastructure ensures close-to-zero ramp-up time. Comprehensive support & maintenance packages are built upon the best industry practices and cutting edge evolving methodologies. Extensive knowledge base of procedures, issues, requests, use cases etc. address most of the everyday problems and help to keep our response and resolution time to a minimum.



qb-Cloud

Built for collaboration, accessible from anywhere with superior security in mind:

High bandwidth symmetrical access from anywhere:

- **Stateful inspection firewall**
- **Client-to-site VPN**
- **Site-to-site VPN**
- **Certificate access**
- **One-time password access**
- **Intrusion prevention systems**
- **Optional data encryption**

Comprehensive management:

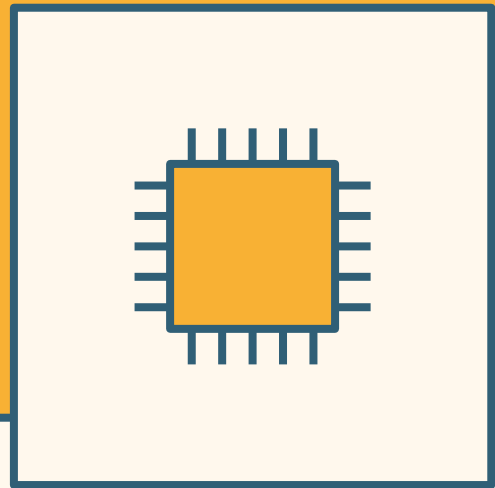
- **Hardware infrastructure management layer**
- **Batch / Cluster management tools**
- **Data center physical & environmental control**

Carrier grade infrastructure built for High availability (uptime):

- **Redundant air conditioning**
- **Electricity & internet connectivity**
- **N+1 standby components**
- **Data management, snapshotting & replication**
- **Easy data retrieval for further usage**

Data / environment liberation guaranteed:

- **Guaranteed confidentiality**
- **Any-time access**
- **Clear transition path to on premise infrastructures**



qb-Cloud / EDA

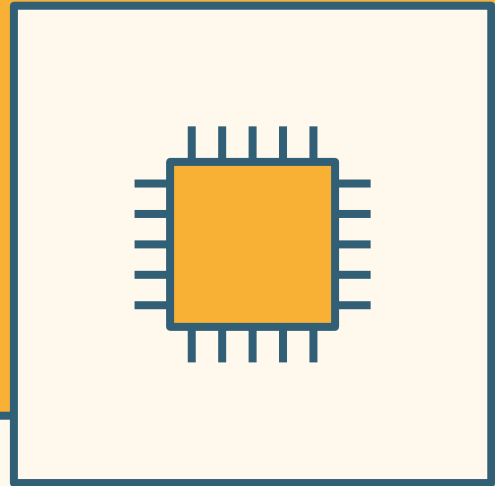
qb-Cloud / EDA provides a ready-to-go specialized HPC service which configures and controls all required components, orchestrates them to sustain high throughputs and guarantees the bullet proof environment stability and availability.

Electronic Design Automation (EDA) copes with a very high level of complexity and presents unique challenges in all its distinct workflows: design, simulation, verification and manufacturing. The multitude of these challenges and the peculiarities of tools used in the industry requires an appropriate level of sophistication in designing, setting and operating the computational environment and processes.

This Cloud based solution allows our clients to concentrate on their core tasks while offloading peak computing demands, increasing cost effectiveness and shifting Capital Expenses to Operational ones.



+



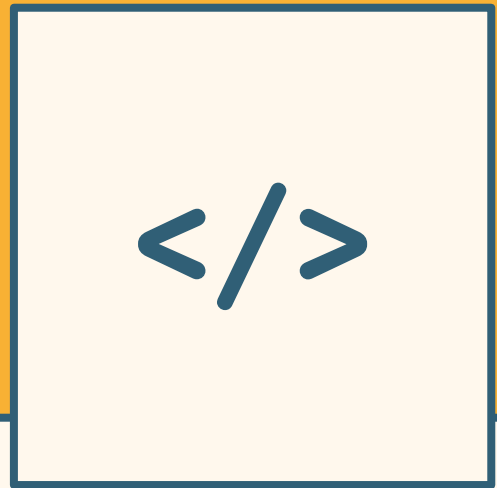
qb-Cloud / EDA

We take care of every step in a typical EDA process:

- **Needs assessment and planning**
- **HPC EDA / Chip design working environment**
- **Toolchain deployment**
- **License management**
- **Application Access / Permissions management**
- **User environment setting**
- **Configuration management**
- **Batch / DRM management tools**
- **Runtime Design Automation FlowTracer**
- **Oracle Grid Engine**
- **Platform LSF**
- **Performance management & troubleshooting**
- **Monitoring & Alerting**
- **Periodic checkups & status reports**
- **Open source development tools**



+



qb-Cloud / SWDev

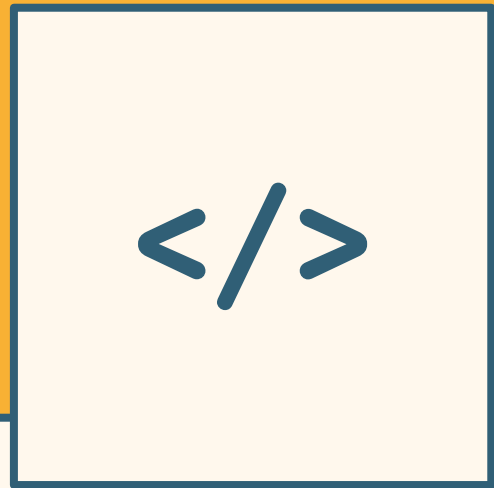
qb-Cloud / SWDev provides a ready-to-go working environment that is tailored for Software Development workflows. It is functionally rich and highly customizable.

Software Development is a diversified field in which well-established tools and practices coexist with ever-evolving “bleeding edge” technologies. The balancing act between healthy conservatism and dynamic effectiveness while remaining agile is nothing short of an intricate art form. The various configuration and tuning options required to achieve specific development goals only add to the complexity of the task.

Choosing proper tools and workflows, managing user permissions and ensuring uninterrupted service may be a major organizational distraction using up manpower and technical talent.



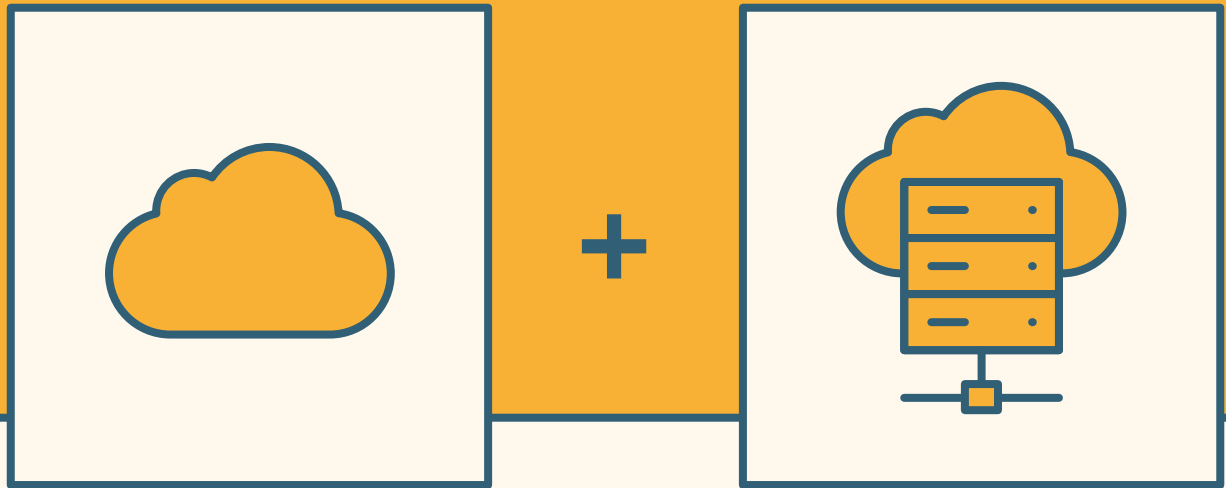
+



qb-Cloud / SWDev

Our Cloud based solution helps the clients do what they do best - design, develop, debug and deliver software:

- **Needs assessment consulting**
- **Environment definition & fast ramp-up**
- **S/W Development environment support**
- **User environment setting**
- **Application Access / Permissions management**
- **DevOps / Agile**
- **Monitoring & Alerting**
- **Periodic checkups & status reports**
- **Configuration management**
- **Performance management & troubleshooting**
- **Added value open source development tools**



qb-Cloud / Hosting

qb-Cloud / Hosting provides a ready-to-go environment for catering Software as a Service (SaaS). It delivers your applications from within the Cloud through a customizable, secure, reliable and highly available Application Hosting with simple deployment, configuration and maintenance procedures. Simply put, this is a general purpose environment intended for a broad range of domains, applications and services.

Our extensive knowledge and experience in the field allows us to identify the patterns that are common for the multitude of application types. In turn we can offer time-proven practices for each case. Bandwidth optimization, load balancing, computational efficiency, data integrity and replication are at the core of our day-to-day challenges.

At the same time we are always ready to customize and properly engineer the actual deployment in order to satisfy the unique requirements of the less-than-usual applications flock.

Customizable application hosting packages:

- **Redmine**
- **FTP server**
- **Bitbucket / GitLab**
- **3rd party application**
- **Secure access**
- **Monitoring & Alerting**
- **Periodic checkups & status reports**



qb-InHouse

qb-InHouse provides cost effective solutions on the premises. We apply our best practices in order to achieve a high effectiveness of InHouse operations for those who require it, where and when it is needed.

There is a broad class of companies that are not allowed or rather prefer not to move their data center off-site or to delegate its management to an external agent. Instead they insist on keeping all IT operations InHouse. For some it is because of strict security or regulatory requirements (e.g. medical, financial or government related data, corporate compliance requirements). Some require physical proximity to the servers because their company's mandate for routine development or business tasks requires it (e.g. hardware development, compatibility testing or certification labs). Some have relatively well defined long-term plans and engagements which make InHouse deployments attractive such as the amortization of costs, fuller

control over functionality and greater flexibility in maintenance.

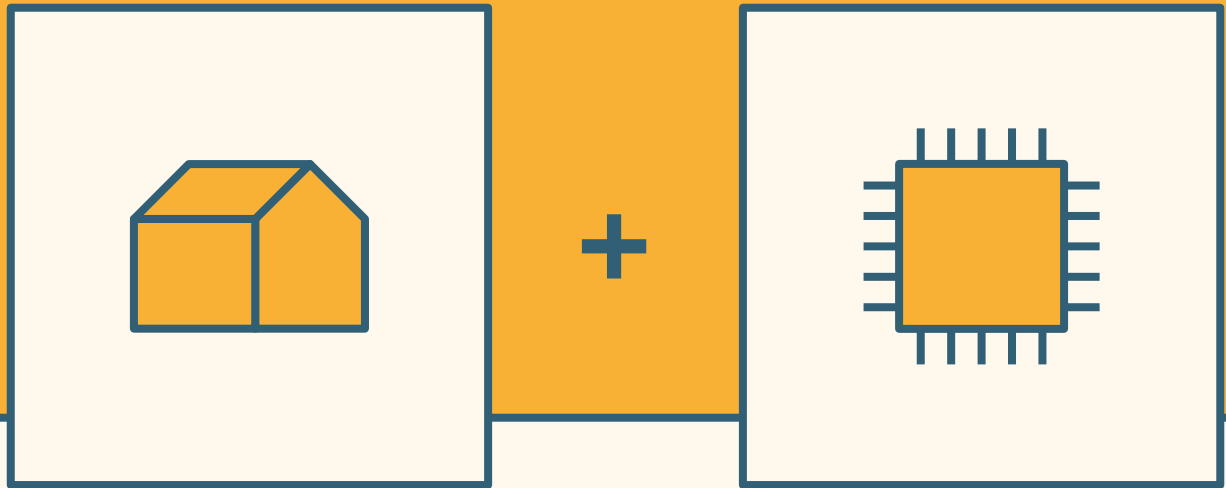
Special needs, limitations and particular situations abound and we are keen to address them by proposing a reasonable and widely appealing SLA and guaranteeing very high flexibility. One of the primary concerns in most of these cases is how to integrate the IT infrastructure with the ongoing R&D activity related to the core business. The optimal solution is to make the IT infrastructure an integral part of the core business processes, sometime a critical part of its product cycle. Sometimes ready-made closed solutions do exist, but more often it is required that they be painstakingly designed and gradually built.



qb-InHouse

qb-InHouse solutions strive to meet the above requirements and constraints. This spares lots of resources and shortens time-to-market without compromising quality. This usually becomes quite apparent with mission critical issues such as Security and Storage, but the truth is that many smaller and less conspicuous concerns and decision points may become just as important.

- **One stop shop approach**
- **Project management orientation**
- **Flexibility**
- **Build to scale**
- **Addressing security threads priorities on budget:**
 - Stateful inspection firewall,**
 - Client-to-site VPN , Site-to-site VPN, certificate Access, One-time password access, Intrusion prevention systems**
 - Optional data encryption**
 - Right Sizing**
 - Capacity planning**
 - Reasonable /cost effective infrastructure**
 - High availability solutions**
 - N+1 standby components**
- **Storage / Data management**
 - Storage sizing & design**
 - Data snapshotting, replication**
- **Monitoring & Alerting**
- **Periodic checkups & status reports**
- **S/W Development environment support**
- **Configuration management**
- **Batch / DRM management tools**
- **Performance management & troubleshooting**
- **Front End workstations management**
- **Added value Open source development tools**
- **Guaranteed confidentiality**



qb-InHouse / EDA

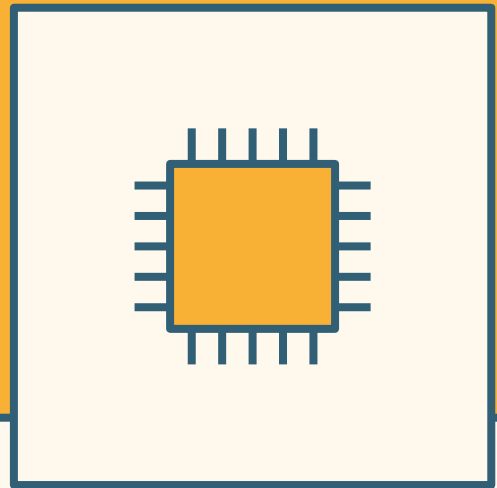
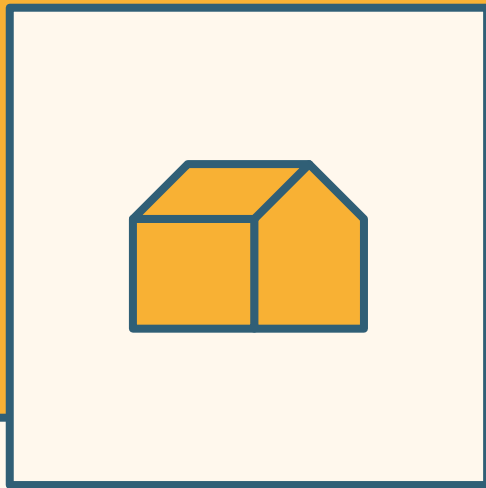
qb-InHouse / EDA provides cost effective, flexible, on the premises solutions tailored for special needs within the Semiconductor industry. It is a good match for companies that have long-term ambitious growth strategy and large-scale diversified hardware labs to build.

Electronic Design Automation (EDA) deals with a high level of complexity and presents unique challenges in all its distinct workflows: design, simulation, verification and many others. The multitude of these challenges and the peculiarities of tools used in the industry requires an appropriate level of sophistication in designing, setting and operating of the computational environment and processes.

We offer specialized HPC deployments for the InHouse semiconductor development facilities, designed and built to configure and

control all required components, to orchestrate them to sustain high throughputs while supporting the highest system stability and availability.

We strive to maximize all typical up-sides of keeping the data center on premise: long term costs amortization, full control, high level of customizability, and testing labs. We propose an appealing SLA which guarantees that the above concerns are properly addressed without compromising flexibility and the ability for affecting changes in the future.



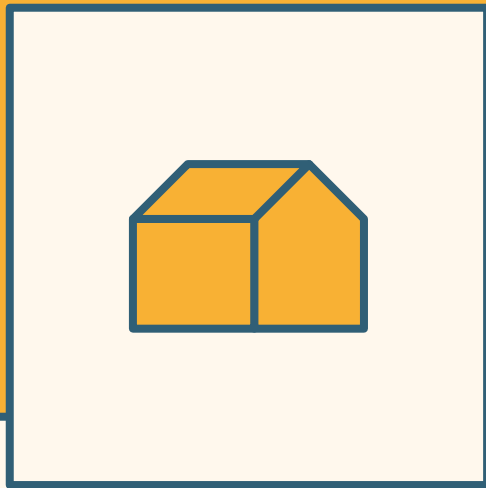
qb-InHouse / EDA

Various requirements demand InHouse deployment. We are able to meet them by proposing a reasonable SLA.

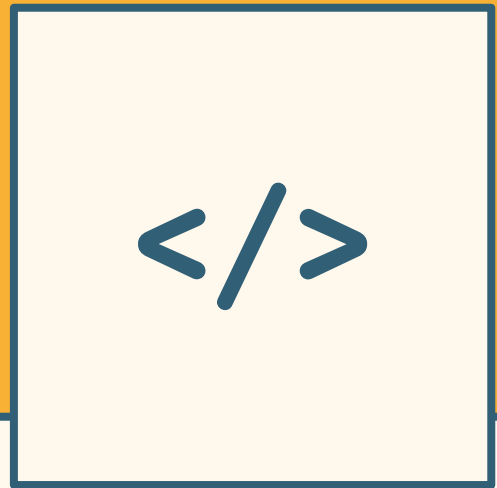
A common concern is how to integrate the IT infrastructure with the ongoing R&D activity related to the core business. Our solution is to make the IT infrastructure an integral part of the core business processes. Ready-made closed solutions can exist, but more often they are painstakingly designed and gradually built.

qb-InHouse / EDA solutions allow our clients to integrate the IT infrastructure with the ongoing core business activities. These obviously include R&D but may also involve other processes such as lab testing, collaboration, subcontractors coordination, applications management.

- **Needs assessment consulting**
- **HPC EDA / Chip design working environment**
- **Testing environment lab design**
- **Toolchain deployment**
- **Licence management**
- **User environment setting**
- **Application Access / Permissions management**
- **Networking & Security**
- **Configuration management**
- **Batch / DRM management tools**
- **Virtualization solutions**
- **Storage / Data management solutions**
- **Front End workstations management**
- **Open source development tools**
- **Performance management solutions**



+

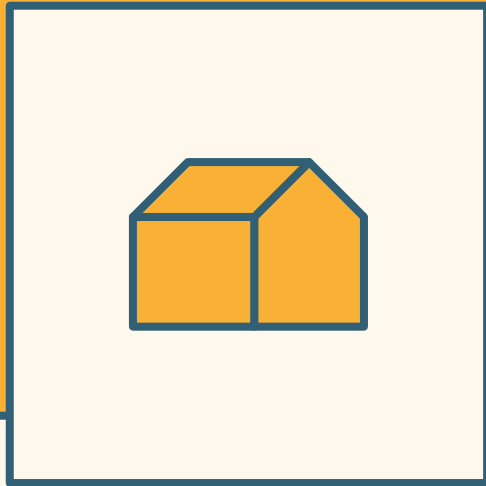


qb-InHouse / SWDev

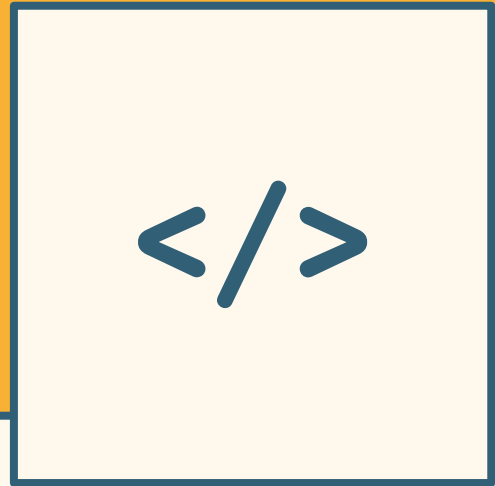
qb-InHouse / SWDev provides cost effective flexible on the premises solutions tailored for the special needs of Software Development. It is a good match for companies having sophisticated lab or data center setups with relatively predictable long term scale. Such companies usually require physical access to the servers and might be concerned about the Security and Intellectual Property aspects of the R&D process.

Software Development is a diversified field in which well-established best tools and practices coexist with ever-evolving “bleeding edge” technologies. The balancing act between healthy conservatism and dynamic effectiveness and flexibility is sometimes nothing short of an intricate art. Various configuration and tuning options required to achieve specific development goals only add to the apparent complexity of the task.

Choosing proper tools and workflows, managing user permissions and ensuring uninterrupted service may be a major organizational distraction sucking in effort and technical talent.



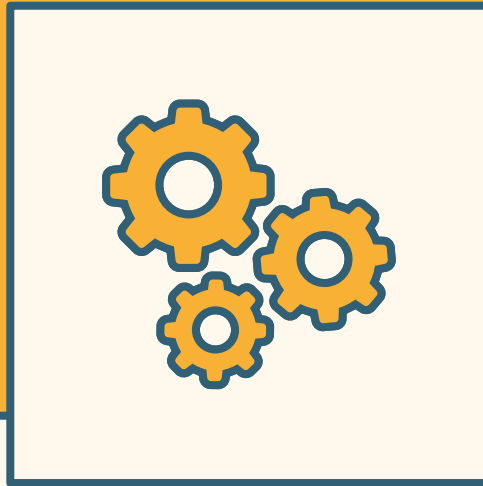
+



qb-InHouse / SWDev

Our solutions may bring important contribution to the integration between the IT operations and the core business tasks. Some companies tend to mistake the “let’s do the right thing tomorrow” approach for an effective or even “lean” way of administering the IT, especially if it is a startup. We can help them have “the right thing” up and running today.

- **Needs assessment consulting**
- **User environment setting**
- **Application Access / Permissions management**
- **DevOps / Agile**
- **S/W Development environment support**
- **Front End workstations management**
- **Configuration management**
- **Open source development tools**

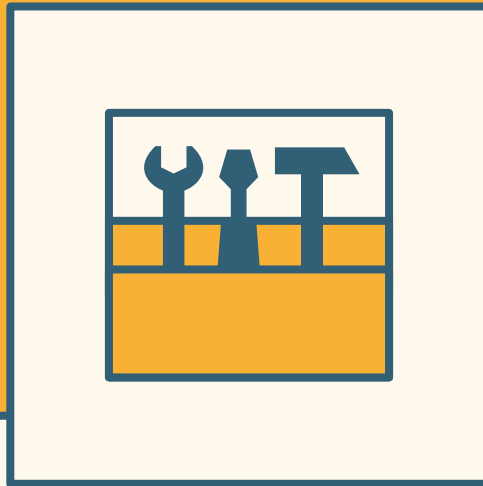


DevOps

DevOps provides the technological basis for embedding DevOps integrated processes into the fabric of the company workflow. It is designed to enable the Agile approach in practical terms, by leaving the buzzwords behind and focusing on the real work instead.

DevOps is a relatively new and emerging field. Nonetheless we have amassed comprehensive experience with introducing DevOps solutions into existing systems and with planning the DevOps based development cycle when helping to lay the foundations for a new startup.

- **Configuration management**
- **Build Automation / Software delivery**
- **Testing / Staging / Production environments design**
- **Amazon Web Services (AWS)**
- **Google Cloud Platform**
- **Google Apps for Work**
- **Microsoft Office 365**
- **Microsoft Azure**
- **Zendesk Customer Service**
- **Open-source cloud orchestration solutions**



Professional Services / Expertise Sharing

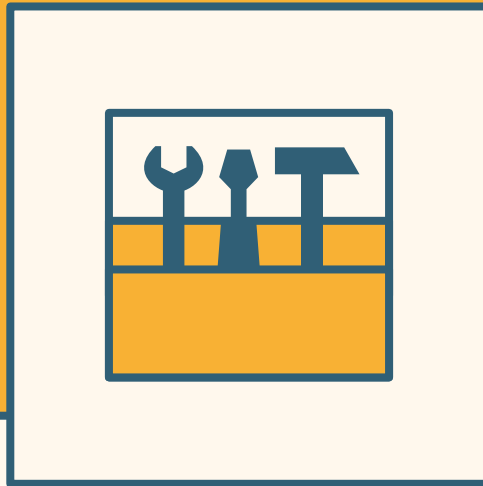
While providing comprehensive solutions at large we are always ready to help with tricky and unruly specifics. “Limited scope” problems give rise to virtually unlimited complexity, which demands deep understanding, trusted intuition, relevant expertise and surgical execution.

Being a team of seasoned professionals with 20 years of experience in versatile IT areas we are the one to turn to for solutions to such complex tasks.

We want to share our experience with our customers so they may benefit and:

- **Resolve existing issues**
- **Cut costs**
- **Streamline their processes**
- **Increase performance**
- **Cover unaddressed niches**

All these improvements will eventually create additional value, both genuine and perceived. This may be very important for the companies seeking new investments or preparing for mergers or IPO. We can help them to ensure corporate compliance, define and re-organize the processes and optimize cost-performance for the sake of increasing attractiveness in the eyes of investors and other stakeholders.



Professional Services / Expertise Sharing

Linux / Unix / HPC

- All Linux / Unix flavors
- Deploying Linux systems environment, defining system standards and operating policies
- Providing proactive monitoring of UNIX systems environment
- User support, system application support
- Data Continuity
- Performance monitoring & troubleshooting

Networking

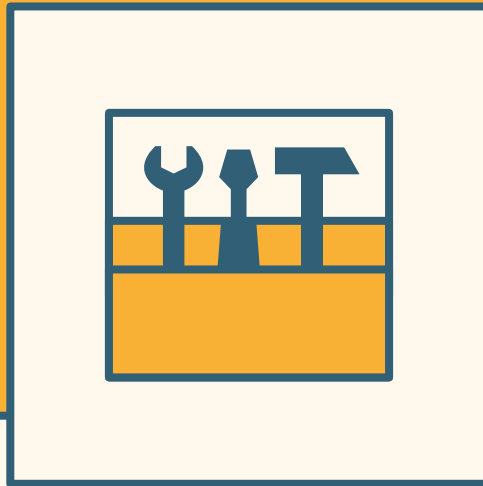
- Design & implementation of networking topology
- Sizing & load management
- WiFi solutions
- Performance management & troubleshooting
- Network security & connectivity

Security

- Open source carrier grade firewall
- Fortigate family product
- Cisco products family
- Checkpoint products family
- IDS / IPS
- Strong authentication solutions (2 factor)
- Application security solutions
- Competitive Open Source solutions
- Penetration Testing

DevOps

- Cloud management (AWS, Google CE, Microsoft Azure)
- Deployment & orchestration automation solutions
- Monitoring, performance, troubleshooting
- CI / CM
- Scripting



Professional Services / Expertise Sharing

Storage

- **Redundant storage solutions**
- **Storage performance monitoring, sizing, troubleshooting**
- **Software defined storage**
- **Replication**
- **Enterprise grade storage solutions (EMC, NetApp)**
- **Cloud backup / DRP**

Virtualization

- **VMware**
- **KVM / Proxmox**
- **Hyper-V**
- **Virtualization environment planning and deployment**
- **Monitoring , performance, troubleshooting**
- **Advanced solutions**

FrontEnd / Microsoft technologies

- **Setting FrontEnd guidances**
- **Microsoft products family**
- **Apple products family**
- **Linux desktops support**
- **Providing time support & problem resolution**
- **Streamlining the support & provisioning procedures**
- **Customer awareness & guaranteed satisfaction**



qb Systems Inc.

53 Yehuda Hayamit St.

Tel Aviv - Yafo 68134

+972 525989901

info@qb systems.biz

www.qb systems.biz



Company
Veriest

Solution
qb-Cloud / EDA

Industry
EDA

Veriest is an international design house providing forefront ASIC and FPGA design and verification services, as well as cutting edge EDA verification tools and platforms. Veriest's portfolio of clients includes a full range of globally established industry leaders, defense companies, as well as startups at preliminary stages of developing high-end chip technology.

<http://www.veriest-v.com/>

Business Objectives	qb Solution	Client's Benefits
The company started to grow fast, so we needed a robust and scalable solution to streamline our semiconductor R&D, which was also highly available for international expansion.	We recognized the need for the solution to be effective for current needs and future growth. Our qb-Cloud/EDA solution fits that perfectly. We managed to provide not only a cost effective solution for current needs but also provide seamless path during the years to come.	

“Being accessible from everywhere and keeping most secure qb systems’ solution enabled us to concentrate on core business by streamlining & automating tasks with zero ramp up time and nearly 100% uptime while optimizing our expenses with a flexible pay-as-you-go scheme...”

Hagai Arbel
Veriest Founder and Chairman



Company
Skyfence

A subsidiary of Imperva (IMPV)

Solution
DevOps

Industry
Business security

Imperva Skyfence Cloud Gateway is a cloud access security broker (CASB) that provides visibility and control over sanctioned and unsanctioned cloud apps. Organizations can use this cloud security service to discover SaaS applications in use and assess related risks. They can also enforce controls to prevent account-centric threats, meet compliance requirements, and protect user accounts and data in the cloud.

<https://www.imperva.com/products/skyfence>

Business Objectives	qb Solution	Client's Benefits
A cloud service consisting of complex infrastructure over multiple data centers. DevOps team responsibilities include setup, maintenance and monitoring of infrastructure-level, application, backend services (Big data DBs), and dev support.	qb provided professional services for the aforementioned team both on a day-to-day basis and for peak loads, delivering automation solutions, process documentation and professional devops engineer.	Provided with a timely set of solutions during rapid expansion of the Skyfence operations infrastructure. This allowed us to provide a better service for our customers while reducing the total cost of the project.

“Working with the qb Systems team has been a pleasure both on a personal and professional level. Challenges and changes were addressed with enthusiasm and a willingness to assist...”

Ofer Yarom

Imperva Skyfence

Director, R&D Operations at Skyfence



Company
Rocketick

Solution
qb-Cloud / EDA

Industry
EDA

Innovative startup allowing semiconductor verification customers to accelerate their tasks tremendously, Rocketick helps chip manufacturers reduce the overall time to market new chip designs by up to 30%. Its flagship product, RocketSim, solves functional verification bottlenecks by complementing simulators with a multicore processor based co-simulation acceleration solution, offering over 10X faster simulations for highly complex designs. RocketSim offers outstanding coverage and capacity, allowing teams to tape-out products with much greater confidence.
<http://www.rocketick.com/>

Business Objectives	qb Solution	Client's Benefits
<ul style="list-style-type: none">• Bootstrap• Time to market• They are also very tech savvy and demanding of different non standard solutions	<p>qb provided design, implementation, professional services and ongoing support both during the bootstrapping phase and all the way through the highly successful acquisition. They kept focus on our current and future needs, and let Rocketick folks get their jobs done. They helped us build a complex verification simulation lab and a standardized easy-to-manage R&D environment. qb also greatly contributed to building HPC and cost-effective Software defined storage for the R&D Core needs.</p>	<p>Provided with timely and cost effective solutions both for operation and R&D. This gave us a great tool which shortened time to market and kept the budget tight while making sure things got done.</p>

“Working with qb Systems folks was a pleasure, both personally and professionally. They were always eager to find the optimal solution for any challenge in the most suitable and tech savvy manner....”

Tomer Ben David
CEO and VP R&D



Company
Vtool

Solution
qb-Cloud / EDA

Industry
EDA

Business Objectives	qb Solution	Client's Benefits

“I’ve been using QB services for the past 7 years in 3 different companies (Sigma Designs, Veriest-Venture and currently Vtool). Being a demanding customer, I must admit that QB are not only highly-professional, but they are always willing to listen, to improve, to explain and to justify actions. They are always available (and I mean weekends, and crazy working hours). During this long period I suffered from negligible downtime times, out of which most of them were for upgrades and improvements. I am very careful when I give recommendations, as giving a bad one will also affect my reputation. But in this case, I’m 100% confidence that picking QB for Linux and EDA is the right decision....”

Asi Lifshitz
CTO, The Vtool



Company

Annapurna Labs

Amazon division

Solution

qb-InHouse / EDA

Industry

EDA

Innovative startup developing a complete portfolio of solutions for home gateway, Wi-Fi Router, and Network Attached Storage (NAS). We enable OEMs and service providers to deliver multimedia, storage, security, data security, Internet of Things (IoT), cloud integration, and other services for the connected home.

<http://www.annapurnalabs.com/>

Business Objectives	qb Solution	Client's Benefits
The company started to grow fast, so we needed a robust and scalable solution to streamline our semiconductor R&D, which was also highly available for international expansion.	We recognized the need for the solution to be effective for current needs and future growth. Our qb-Cloud/EDA solution fits that perfectly. We managed to provide not only a cost effective solution for current needs but also provide seamless path during the years to come.	We recognized the need for the solution to be effective for current needs and future growth. Our qb-Cloud/EDA solution fits that perfectly. We managed to provide not only a cost effective solution for current needs but also provide seamless path during the years to come.

“Working with qb Systems folks was a pleasure both personally and professionally. They were tech savy and always eager to solve problems and overcome challenges, regardless of scope, in order to arrive at the optimal solution”

Eli Kurin

VP Operations at Annapurna Labs